

GCM-12

High Speed Microcentrifuge

USER MANUAL



Feature-Rich High Speed Microcentrifuge



IMPORTANT: Carefully and completely read this user manual to ensure user safety and achieve most efficient operation.

USER MANUAL

GCM-12 High Speed Microcentrifuge

Contents

Important Safety Information	1-2
1. Specifications.....	2
2. Declarations of Conformity	3
3. Required Operating Conditions	3
3.1 Basic Operating Conditions.....	3
3.2 Transport and Storage Conditions	3
4. Installation.....	4
4.1 Location	4
4.2 Connection of the Power Cord and Grounding.....	4
5. Unit Overview	5
6. Control Panel	5
7. Rotor Preparation	6
7.1 Inspect the Rotor	6
7.2 Symmetrically Load Tubes Into Rotor	6
8. Operation.....	6-9
8.1 Normal Operation	7-8
8.2 RCF Operation.....	8
8.3 Pulse Operation.....	8-9
9. Maintenance	9
9.1 Cleaning.....	9
10. Troubleshooting Tips.....	10-11
10.1 Opening the Lid	10-11
11. Rotor Instructions	11-12
11.1 Rotor Structure.....	11
11.2 Rotor Installation and Removal.....	12
11.3 Available Rotors and Adapters.....	12
12. Calculating RCF	13
13. Returning and Disposal	13
13.1 Returning the Unit.....	13
13.2 Disposal	13
14. Ordering Information	13
15. Warranty	Back Cover
16. Service	Back Cover




© 2019 Globe Scientific Inc. all rights reserved. Globe Scientific Inc. and the Globe Scientific logo are registered trademarks of Globe Scientific Inc. No part of this manual may be reproduced or otherwise transmitted without the prior written consent of Globe Scientific Inc.

Globe Scientific Inc. reserves the right to change information at any time. Note that specifications of the centrifuge are subject to change.

Important Safety Information

Common Safety Precautions

Carefully read the following safety precautions for a thorough understanding.

- Follow the instructions and procedures described in this manual to operate this centrifuge safely.
- Carefully read all safety messages in this manual and the safety instructions on the centrifuge.
- Safety messages are labeled as indicated below. They are in combination with signal words of “WARNING” and “CAUTION” with the safety alert symbol  to call your attention to items or operations that could be dangerous to you or other persons using this centrifuge. The definitions of signal words are as follows:



WARNING: Personal Danger

Warning notes indicate any condition or practice, which if not strictly observed, could result in personal injury or possible death.



CAUTION: Possible Damage to Centrifuge

Caution notes indicate any condition or practice, which if not strictly observed or remedied, could result in damage or destruction of the centrifuge.

NOTE: Notes indicate an area or subject of special merit, emphasizing either the product’s capability or common errors in operation or maintenance.

- Do not operate the centrifuge in any manner not described in this User Manual. When in doubt or if you have any troubles with this centrifuge, please CONTACT GLOBE SCIENTIFIC AND ASK FOR HELP.
- The precautions described in this User Manual are carefully developed in an attempt to cover all the possible risks. However, it is also important that you are alert for unexpected incidents. Be careful operating this centrifuge.



WARNING

- This centrifuge is not explosion-proof. Never use explosive or flammable samples.
- Do not install the centrifuge in or near places where inflammable gases are generated or chemicals are stored.
- Do not place dangerous materials within 30cm (approximately 12 inches) of the centrifuge.
- Prepare all necessary safety measures before using samples that are toxic, radioactive or contaminated with pathogenic micro-organisms. Use of these materials are at your own risk.
- If the centrifuge, rotor and accessories have been contaminated by solutions with toxic, radioactive or pathogenic materials, clean them according to the decontamination procedure as specified.
- If you require service, please sterilize and decontaminate the centrifuge in advance and then notify the service center the details of the materials and procedure.
- To avoid electrical shocks, ensure hands are dry before handling the power cord or turning on/off the power switch.
- For safety purposes, do not come within 30cm (approximately 12 inches) around the centrifuge when in operation.
- While the rotor is rotating, never release the lid lock.
- Unauthorized repairs, disassembly, or modifying the centrifuge except by an authorized Globe Scientific service center or service technician is strictly prohibited.

Important Safety Information (Cont.)

CAUTION

- This centrifuge must be located on a firm and level table.
- Make sure the centrifuge is horizontal before running.
- Do not move or relocate the centrifuge when it is running.
- Make sure the angle between the lid and cover is greater than 70 degrees when opening the lid.
- Be careful to not put your fingers or hands between the lid and cover when the lid is open.
- If fluid spills in the rotor chamber, please promptly clean and dry with a dry cloth to avoid sample contamination.
- Ensure removal of any objects and/or fragments of the tubes dropped inside the rotor chamber before running the centrifuge.

Rotor Cautions:

- Always check for corrosion and damage on the rotor surface before using it. Do not use the rotor if an abnormality is found.
- Do not set the speed beyond the allowable maximum speed of the rotor kits (rotor and adapters).
- Do not exceed the allowable imbalance.
- Use the rotor and tubes within their actual capacities.
- If the rotor is used with a lid, ensure it is tightened before operation.
- If any abnormal condition occurs during operation, please stop immediately and contact our service center. Notify the service center of the warning code (if displayed) along with the model and serial numbers and a detailed description of the issue.
- Vibrations are likely to damage the centrifuge. Please contact our service center if any abnormality is observed.

1. Specifications

Maximum Speed	15000rpm, increment: 100rpm
Maximum RCF	15100×g, increment: 100×g
Maximum Capacity	1.5/2ml×12
Timer	30seconds - 99minutes-HOLD, continuous operation
Driving Motor	Brushless DC motor
Safety Devices	Door interlock, over-speed detector, over-temperature detector, automatic internal diagnosis
Power Requirements	Single-phase, 110V-240V, 50Hz/60Hz, 3A
Dimensions (mm)	255 × 245 × 140 (L x W x H)
Weight	6kg
Additional features	Speed/RCF switch, pulse operation, processing display, audible reminder

2. Declaration of Conformity

Construction in accordance with the following safety standards:

EN 61010-1
EN 61010-2-10

Construction in accordance with the following EMC standards:

EN 61326-1/ FCC Part 15 Subpart B/ IEC 61010-1

Associated EU guidelines:

EMC directive: 2004/108/EC
Instrument guidelines: 2006/95/EC
This ISM device complies with Canadian ICES-001.
Cet appareil ISM est conforme à la norme NMB-001 du Canada.

Changes or modifications not expressly approved by the party responsible for compliance could void the user's authority to operate the equipment.

NOTE: *This equipment has been tested and found to comply with the limits for a Class A digital device, pursuant to Part 15 of the FCC Rules. These limits are designed to provide reasonable protection against harmful interference when the equipment is operated in a commercial environment. This equipment generates, uses, and can radiate radio frequency energy and, if not installed and used in accordance with the instruction manual, may cause harmful interference to radio communications. Operation of this equipment in a residential area is likely to cause harmful interference in which case the user will be required to correct the interference at his own expense.*

3. Required Operating Conditions

3.1 Basic Operational Conditions

- Power: 110V-240V, 50Hz/60Hz, 3A
- Ambient temperature: 2°C~40°C
- Relative humidity: ≤80%, non-condensing
- No vibration and airflow around the centrifuge
- No static, explosive and corrosive gases around the centrifuge

3.2 Transport and Storage Conditions

- Storage temperature: -40°C-55°C
- Relative humidity: ≤93%, non-condensing

4. Installation

This section describes the instructions that you should adhere to when installing the centrifuge to ensure your safety and optimum performance of the unit. Before moving the centrifuge, the rotor must be removed.

WARNING

- Improper power supply may damage centrifuge
- Make sure the power source conforms to the required power supply before connecting

4.1 Location

1. Place this centrifuge on a firm, flat and level surface and ensure the four feet of this centrifuge stand on the counter firmly. Avoid installing on a slippery surface or a surface prone to vibration.
2. Ideal ambient temperature is $20^{\circ}\text{C} \pm 5^{\circ}\text{C}$, avoid placing the centrifuge in direct sunlight if the ambient temperature exceeds 30°C .
3. Keep obstructions clear of the centrifuge at least 10cm on both sides and at least 30cm behind it to ensure optimal cooling efficiency.
4. Keep away from heat or water to avoid sample temperature issues or centrifuge failures.

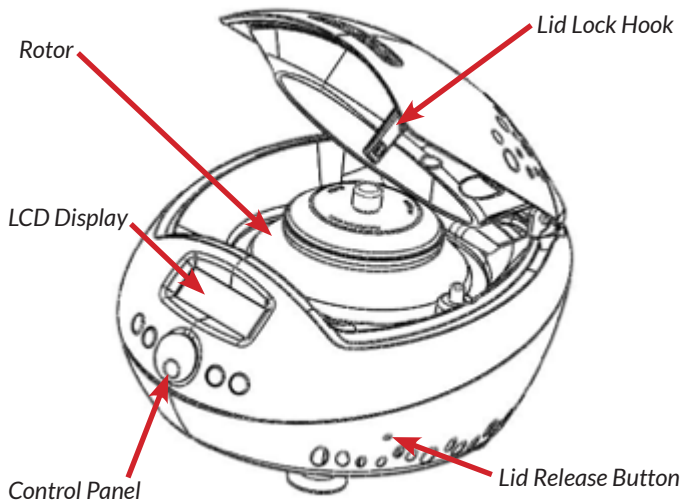
4.2 Connection of the Power Cord and Grounding

WARNING

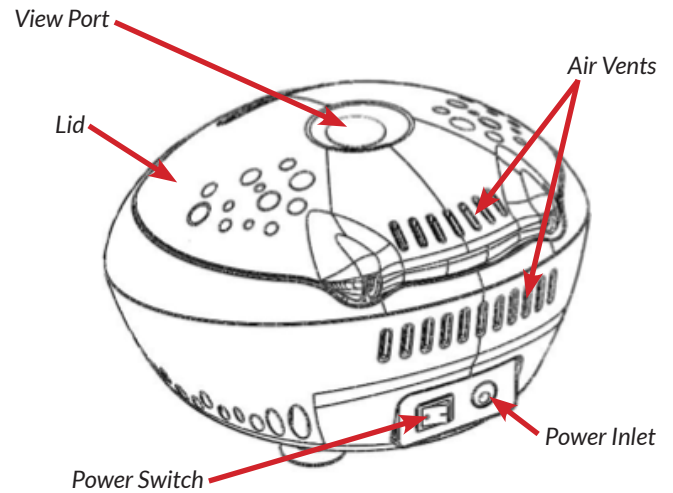
- To avoid electrical shocks, ensure your hands are dry when touching the power cord.
- This centrifuge must be grounded properly.

A minimum 10A outlet providing a sufficient ground is required, and this must meet local safety requirements.

5. Unit Overview



FRONT VIEW



REAR VIEW

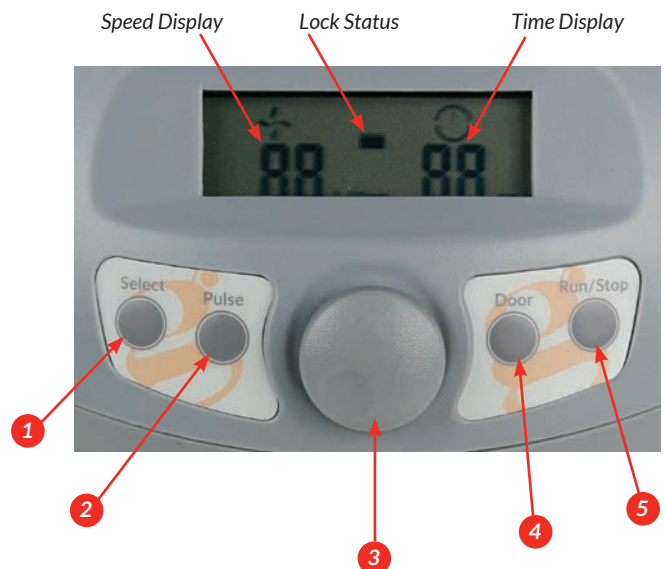
6. Control Panel



OPERATION

IMPORTANT: Plug unit into appropriate main supply based on the rated voltage.

- 1 **Select**..... Press to choose the parameter you wish to modify.
- 2 **Pulse** Press to accelerate and hold at the set speed. The centrifuge stops immediately once this button is released.
- 3 **Adjustment Knob** Rotate clockwise to increase parameter values. Rotate counterclockwise to decrease parameter values. Press to switch between speed and RCF.
- 4 **Door**..... Press to open the lid. This button is not enabled while the centrifuge is running.
- 5 **Run / Stop** Press to start the centrifuge. Press to stop if centrifuge is already running.

CONTROL PANEL



The main display is shown above. The speed is set to 88rpm, the lid is locked and the running time is 88 minutes. When the speed symbol  is rotating, this indicates the centrifuge is running. The rotation of the speed symbol increases with the spin speed of the centrifuge. The time symbol  displays the ratio of working to time setting. The total time setting is divided into 10 sections.

7. Rotor Preparation

CAUTION

- Do not overload samples into the centrifuge as this will cause leaking.
- Do not exceed the actual capacity allowed in this user manual.

7.1 Inspect the Rotor

Check the rotor for corrosion or scratches before using.

CAUTION

- If any abnormality such as corrosion or scratches are found, stop using the rotor and contact Globe Scientific.
- Only Globe Scientific rotors may be used with the centrifuge.

7.2 Symmetrically Load Tubes Into Rotor

IMPORTANT: The rotor should always be loaded in a balanced manner to avoid personal injury and to ensure centrifuge longevity.

- When any tube is loaded, a tube of the same type, volume and weight must be added in the opposite rotor location.
- Never intentionally run the centrifuge in an unbalanced condition even if operation is not affected.

CAUTION

- Make sure the rotor and shaft are tightened. Otherwise, the rotor may come apart while operating and cause damage to the centrifuge and rotor.

8. Operation

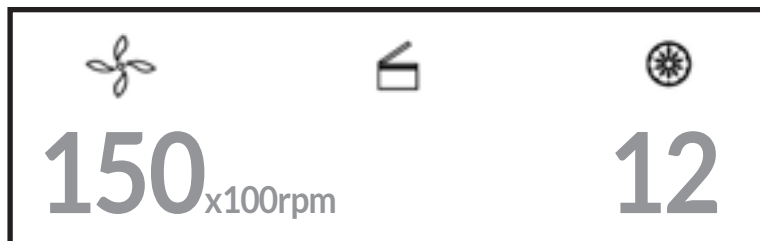
CAUTION

- Do not push or lean against the centrifuge while it is running.
- Do not run the centrifuge when fragments or sample solutions are left in the centrifuge chamber. Always keep the centrifugal chamber clean.
- If the centrifuge makes a strange noise during operation, stop it immediately and contact Globe Scientific. Please include any warning code(s), if displayed.

8. Operation (Cont.)

8.1 Normal Operation

When turning on the power switch, the centrifuge will display the running interface with the values used the last time operated after passing the self-diagnostic checks.



- Speed: 15000rpm. Running time: 12 minutes.
- The lid lock is released.

SET THE OPERATION PARAMETERS

Press the **Select** button to select the desired parameters. The parameters can be modified when the parameter is flashing. Rotate the **Adjustment Knob** clockwise to increase parameter value. Rotate the **Adjustment Knob** counter clockwise to decrease parameter value. Rotate the **Adjustment Knob** faster and the parameter value will increase faster. The minimum speed increment is 100 rpm, the minimum time increment is 1 second.

1. Set the speed

- Press the **Select** button until the speed rpm is displayed.
- When the **Speed** button is selected, the speed symbol will flash the speed value.
- The minimum speed value you can set is 500rpm; the minimum increment is 100 rpm.
- Rotate the **Adjustment Knob** clockwise to increase speed value. Rotate the **Adjustment Knob** counter clockwise to decrease speed value.
- There is a circulating function to increase/decrease the speed values. Rotate the **Adjustment Knob** clockwise to change settings from small » large » maximum » minimum. Rotate the **Adjustment Knob** counter clockwise to change settings from large » small » minimum » maximum.

2. Set the time

- Press the **Select** button, the time value flashes in the time setting mode.
- Rotate the **Adjustment Knob** to set the running time from 30 seconds up to 99 minutes.
- When the time displays HD, the centrifuge is in continuous running mode.

START THE OPERATION

1. Press the **Start / Stop** button to start running the centrifuge

- The timer will begin once the set speed value is reached; then the screen will display the remaining run time.

8. Operation (Cont.)

2. View and modify the operation programs

- Operation programs can be modified after the centrifuge reaches the set speed.
- Pressing the **Select** button returns the display to the program interface and displays setting programs. Press the **Select** button to the desired field. When flashing, rotate **Adjustment Knob** to modify values. Release the button after 5 seconds, and the centrifuge will return to normal operation mode and run according to the new values entered.
- If the set time value has been modified, the operation time is not affected and will continue.

3. Warning display

- If an error occurs during operation, the centrifuge will brake to stop automatically and display the error code on the time/display area. The error code can be checked in the table on page 10, and corrective actions applied accordingly.

END THE OPERATION

1. The centrifuge will brake when it reaches the set time or when the **Start / Stop** button is pressed

- When the rotor stops rotating, the centrifuge will start beeping to alert the operation has finished.

2. Open the lid

- The lid will be released automatically when the operation has stopped.
- With the lid closed, you can press the **Door** button to open it.
- After ending centrifuge operation, the program will store the setting parameters of this operation and will recall these parameters when restarting the program.

3. Remove the rotor and samples

8.2 RCF Operation

1. Turn on the **Power Switch**

2. Set an RCF (Relative Centrifugal Force) value

CAUTION

- Do not exceed the allowable maximum RCF value of the rotor and adapters (section 11.3).

- Press the **Select** button and choose speed unit $\times g$, the speed symbol will then flash into RCF value input status.
- If no button is pressed after the speed value has flashed after 5 seconds, the input mode will be shut down.
- Rotate the **Adjustment Knob** to input an RCF value; the RCF increment is $100\times g$.

3. Set time and start operation as described in Section 8.1

8.3 Pulse Operation

This function is used to remove residual sample material that may have adhered to the interior of tubes or for quick spins.

 **NOTE:** The **Pulse** button works only when the rotor is stopped and the lid is locked.

8. Operation (Cont.)

1. Turn on the power switch and load the rotor onto the shaft, tighten the rotor lid and make sure it is in a secured position, and then close the lid.
2. The centrifuge goes into preparation mode and displays the values of the last run. These values can be reset.
3. Press the **Pulse** button and hold; the centrifuge will then speed up to the set speed. When releasing the **Pulse** button during acceleration, the centrifuge will start to decelerate and stop.

9. Maintenance

9.1 Cleaning

CAUTION

- Failure to follow the recommended instructions for cleaning and disinfecting may result in damage to the unit.

1. Centrifuge

- If the centrifuge is exposed to ultraviolet rays for a long period of time, the lid may discolor or the label may be peel off. It is recommended to cover the centrifuge with a piece of cloth to protect it from direct exposure or to move it from direct exposure.
- If the centrifuge needs cleaning, clean it with a cloth or sponge moistened with a neutral detergent solution.
- If the rotor chamber needs cleaning, clean with cloth or sponge moistened with a neutral detergent solution.
- Sterilize the centrifuge by wiping with a cloth moistened with a 70% ethanol solution.

2. Rotor Chamber

CAUTION

- Do not directly pour water, neutral detergent or disinfectant solution into the rotor chamber, otherwise fluids may leak into the drive units and cause corrosion or deterioration to the bearings.

3. Drive Shaft

- We recommend regular maintenance for the drive shaft. You can wipe the drive shaft with a soft cloth, and then apply a thin coat of silicon grease.

4. Lid

- Clean and sterilize the lid using the same method as in step one above.

5. Rotor

- To prevent corrosion, remove the rotor from the rotor chamber. If not in use for a long period of time, turn the rotor upside down to dry the tube cavities and keep clean.
- For sample leaks in the rotor, rinse the rotor with water. Apply a thin coat of silicon grease to the rotor when it is completely dry.
- The rotor should be checked every 3 months to ensure the tube and rotor cavities are clean and to apply a thin coat of silicon grease.

10. Troubleshooting Tips

This centrifuge has a self-diagnostic function. If a problem occurs, an error/warning code will be displayed on the time display screen and the operator can determine the malfunction with the alarm code on the next page.

Problem		Cause	Solution
Nothing displays on the screen when the Power Switch is turned on		Building circuit breaker or GFI receptacle has tripped	Reset the circuit breaker or GFI receptacle and turn on Power Switch
Abnormal Vibration		Rotor misaligned with motor shaft	Reinstall rotor as shown in Section 11.2
		Samples are unbalanced	Ensure tube weights match, install symmetrically as described in section 7.2
Alarm Code Displayed	E-02 Lid Fault	The lid opened during operation	Close the lid immediately
		The Start/Stop button was pressed while the lid was open	Close the lid and then start normal operation
	E-06 Set Wrong Speed	The set speed exceeds the allowable range	Modify the set speed value
	E-10~86	Refer to service manual	Contact Globe Scientific

- Alarm codes E-1~E-9 are related to incorrect operation/programming. You can continue running the centrifuge after implementing corrective procedures.

10.1 Opening the Lid

WHEN POWERED ON

CAUTION

- The lid should only be opened when the rotor has come to a complete stop.

1. Turn on the power switch; the lid is then released automatically.
2. The lid lock will be released automatically once the operation is finished.
3. It is possible to release the lid by pressing the **Door** button when the rotor has stopped.

IN THE CASE OF POWER OUTAGE

The lid will not open automatically if there is a power outage. It is possible to open manually as follows:

1. Ensure the rotor has stopped rotating.
 - Listen carefully to ensure no rotation can be heard.

10. Troubleshooting Tips (Cont.)

2. Insert a screw driver into each lid release hole to open the lid.

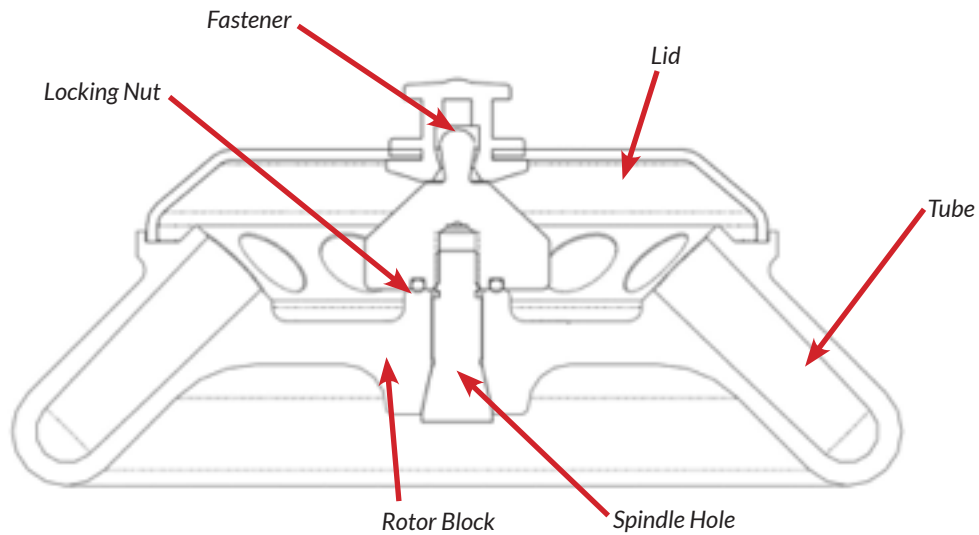
- Holes are located on the left and right sides of the unit.
- Carefully insert a screw driver into the lid release holes and push forward to release the lid.

11. Rotor Instructions

CAUTION

- Read the instructions thoroughly to properly load and use the rotor. (Page 6)
- Do not exceed the allowable maximum speed of the rotor, tube and adapters etc. Ensure the allowable maximum speed of the adapters is lower than the rotor's maximum speed.

11.1 Rotor Structure

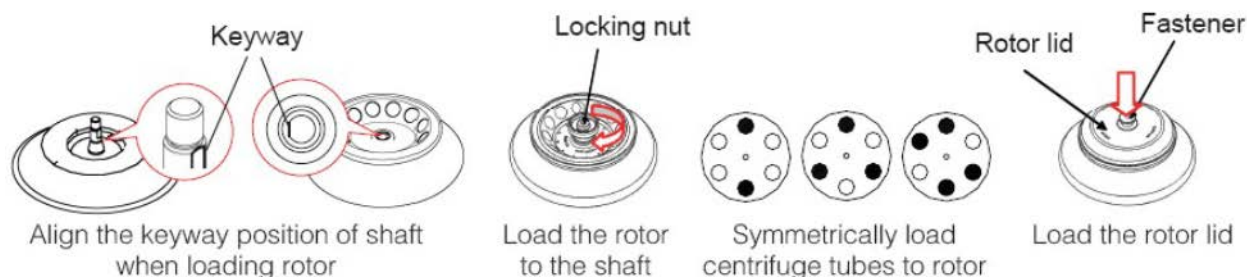


11. Rotor Instructions (Cont.)

11.2 Rotor Installation and Removal

⚠ CAUTION

- Attach the rotor to the rotor shaft. Ensure the rotor is in position and connected with the shaft, tightening the locking nut to secure the rotor with shaft to prevent the rotor from damaging the centrifuge.
- Ensure the rotor lid is firmly tightened to the rotor.



- Load the rotor on the shaft and ensure the rotor is connected well with the shaft.
- Rotate the rotor slightly with your fingers to check if the rotor wobbles on the shaft. If yes, reinstall the rotor again.
- Hold the rotor with one hand, tighten the nut clockwise with the other hand, and make sure to tighten firmly.
- Place the rotor lid on the rotor, press the fastener down and ensure the fastener attaches to the locking nut tightly.
- Close the lid and start running.
- To release the rotor, first pull the fastener up to remove the lid, and then turn the locking nut anti-clockwise.

⚠ CAUTION

- Check the rotor is firmly tightened before running.

11.3 Available Rotors and Adapters

Rotor Type	Tube Type	Adapter Required	Maximum Speed (rpm)	Maximum RCF (×g)	Allowable Imbalance	
					Imbalance	Volume Imbalance
GCM-12-R	1.5/2.0mL Tube	—	15000	15100	2.0g/Tube	5mm/Tube
	0.2mL PCR Tube	MC-12-AD2	15000	11700		
	0.5mL PCR tube	MC-12-AD5	15000	12780		

Note: The centrifuge rotor can separate samples with a density lower than 2.0g/ml. If the sample density is over 2.0g/ml, calculate allowable speed using the following formula:

$$\text{allow speed (rpm)} = \text{max speed} \times \sqrt{\frac{2.0(\text{g/ml})}{\text{sample density (g/ml)}}}$$

12. Calculating RCF

The RCF can be determined with the following formula:

$$RCF = 1.118 \times r \times n^2 \times 10^{-5}$$

r = rotating radius, unit: cm; n = rotating speed, unit: rpm

13. Returning and Disposal

13.1 Returning the Unit



Before returning the unit, a transport securing device must be installed.

Before the unit or its accessories are returned to Globe Scientific, they must be decontaminated and cleaned to protect people, the environment and property.

13.2 Disposal

Before disposal, the device must be decontaminated and cleaned to protect people, the environment and property. When you are disposing of the device, the respective statutory rules must be observed.

Pursuant to guideline 2002/96/EC (WEEE), all devices supplied after August 13, 2005 may not be disposed of as part of domestic waste. The device belongs to group 8 (medical devices) and is categorized in the business-to-business field. The icon of the crossed-out trash can shows that the device may not be disposed of as part of domestic waste. The waste disposal guidelines of the individual EC countries may vary. If necessary, contact your supplier.

14. Ordering Information

Item #	Descriptions	Unit
GCM-12	High Speed Microcentrifuge, 12-Place, 120-240v, 50/60Hz	Each
Accessories		
GCM-12-AD2	Rotor Adapters, for 0.2mL Tubes	24
GCM-12-AD5	Rotor Adapters, for 0.5mL Tubes	24

15. Warranty

This centrifuge is guaranteed for two years from the date of delivery provided that it has been operated and maintained properly.

The rotor is guaranteed for five years from the date of delivery provided that it has been operated and maintained properly.

Instances that would void the warranty include:

1. Failures caused by incorrect installation.
2. Failures caused by rough or improper handling.
3. Failures caused by transportation or relocation after installation.
4. Failures caused by unauthorized disassembly or modification.
5. Failures caused by using non-standard spare parts or accessories and/or unauthorized modification of the rotor or centrifuge.
6. Failures caused by natural disasters including fire, earthquakes, etc. (force majeure).

16. Service

To ensure safe and efficient operation of your GCC series centrifuge, it is necessary to keep the centrifuge clean and to use as recommended in this manual. If centrifuge has problems, do not attempt to repair it by yourself. In the unlikely event you require service or assistance, please contact Globe Scientific at:



E-Mail:

service@globescientific.com

Sales and Technical Support:

1 800-394-4562 ext. 2

1 201-599-1400

1 201-599-1406 fax

International Sales:

1 201-599-1400

internationalsales@globescientific.com

Customer Service:

1 800-394-4562 ext. 1

1 201-599-1400

1 201-599-1406 fax

Address:

Globe Scientific Inc.

400 Corporate Drive

Mahwah, New Jersey 07430

USA